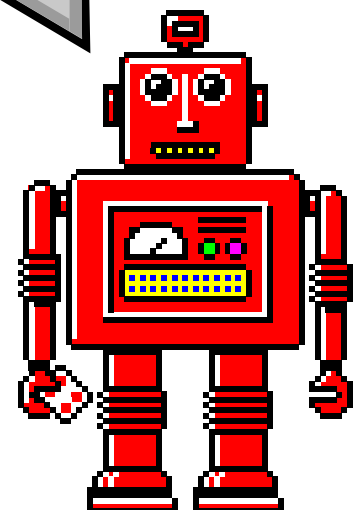
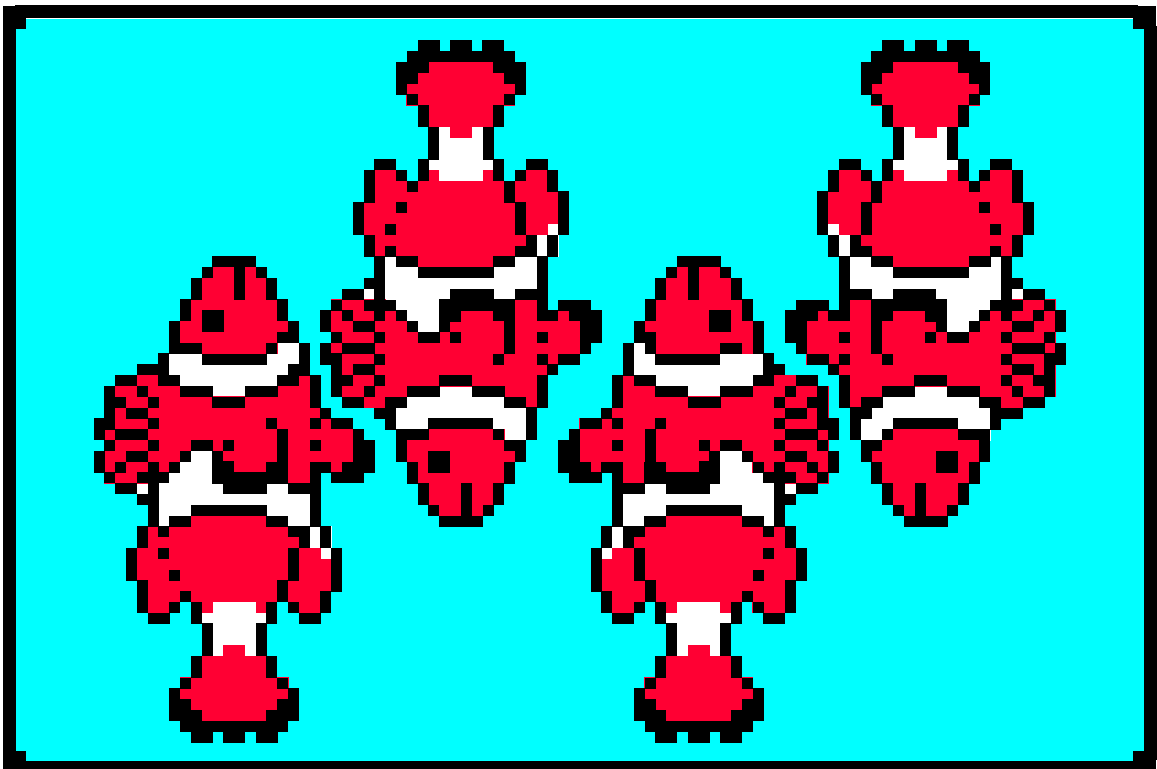
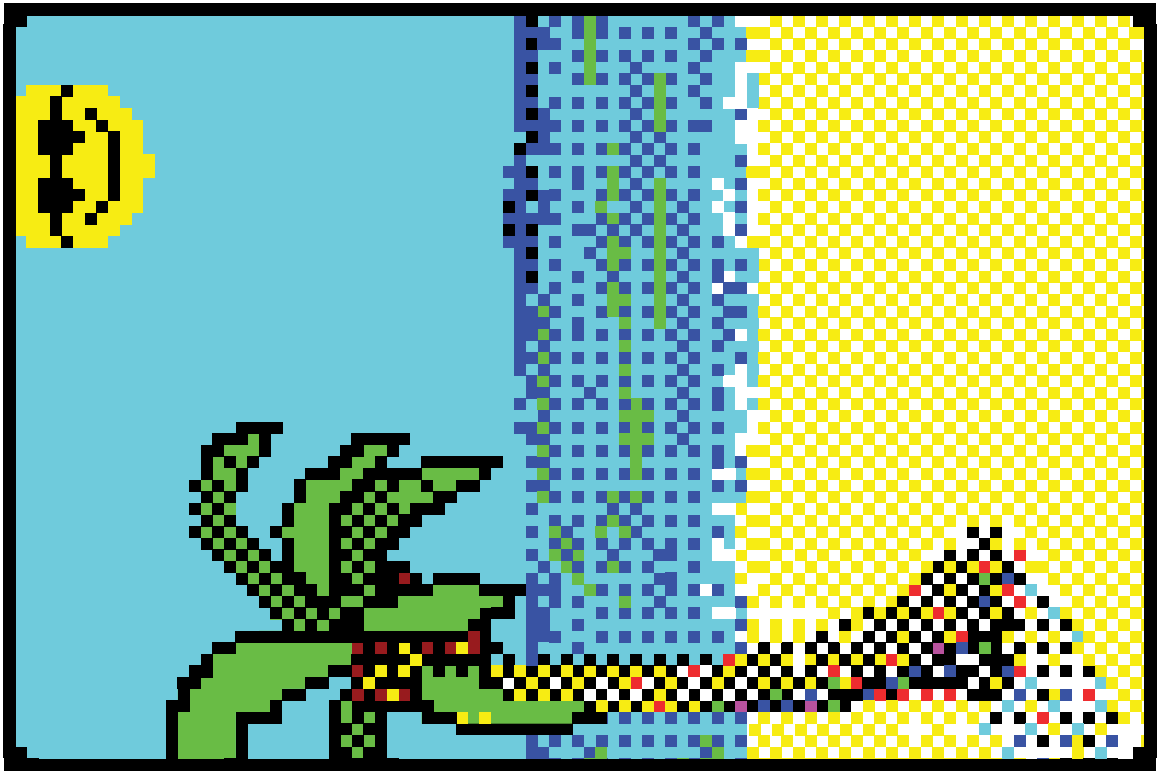


Here are some helpful tips:

- 1. Print double-sided**
- 2. Skip this page when printing**
- 3. Use thicker card-stock
for best results**
- 4. Cut along black border**
- 5. Enjoy.**

**Solitaire
print-at-home
post cards**



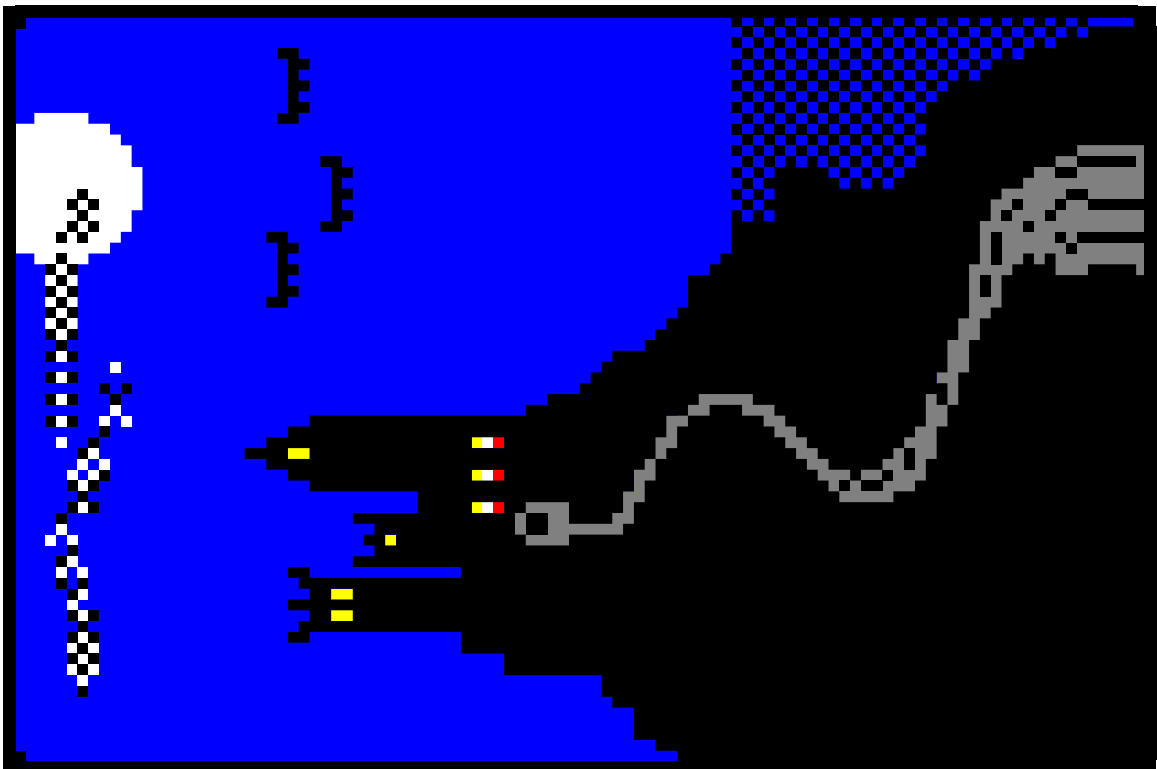
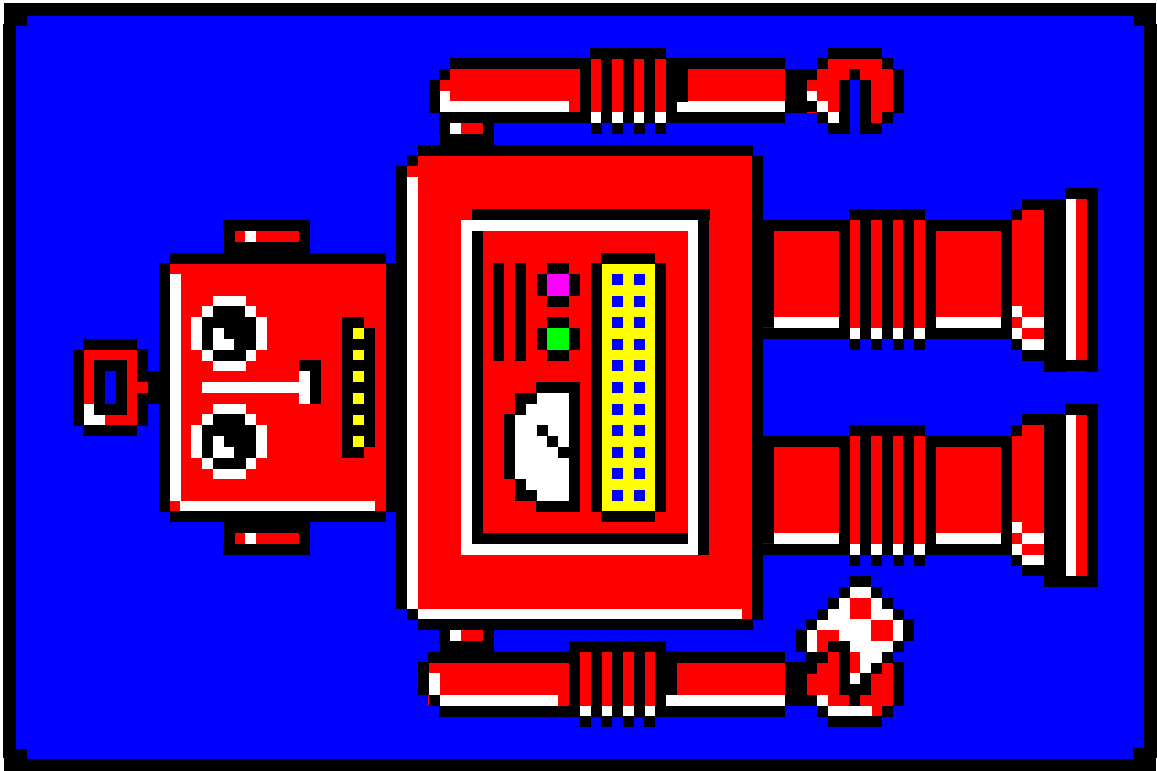




**Place
Stamp
Here**



**Place
Stamp
Here**

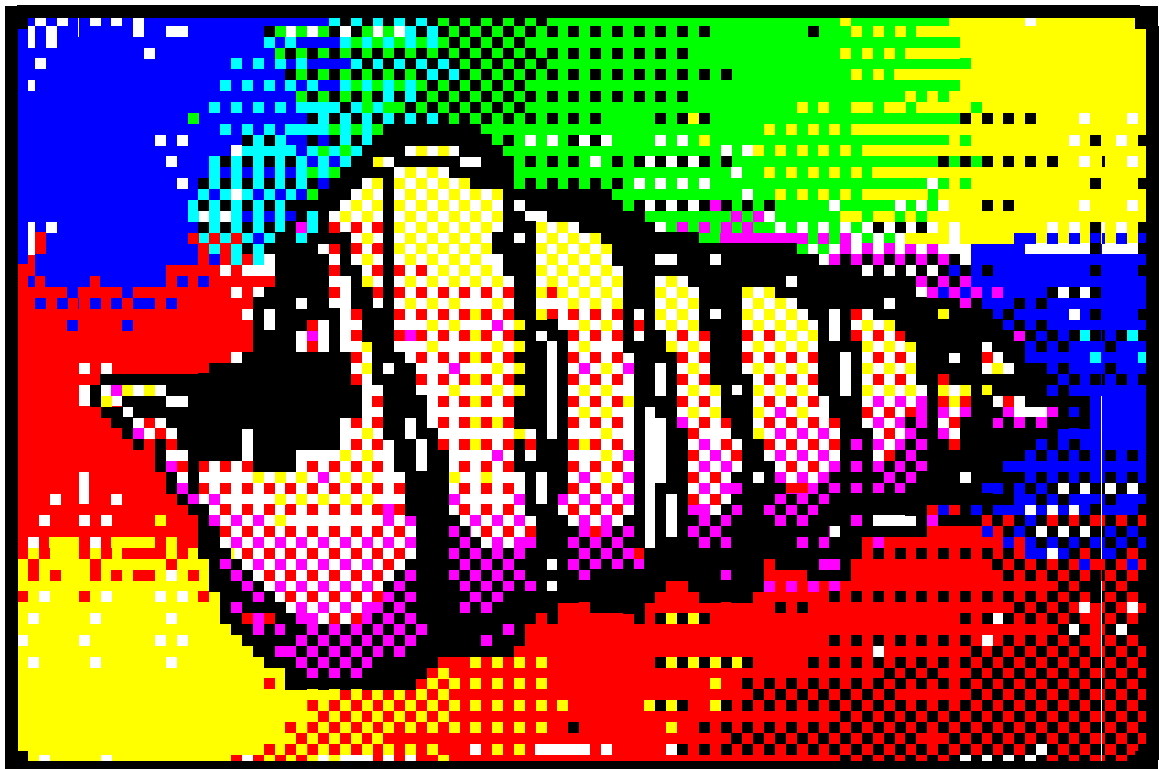
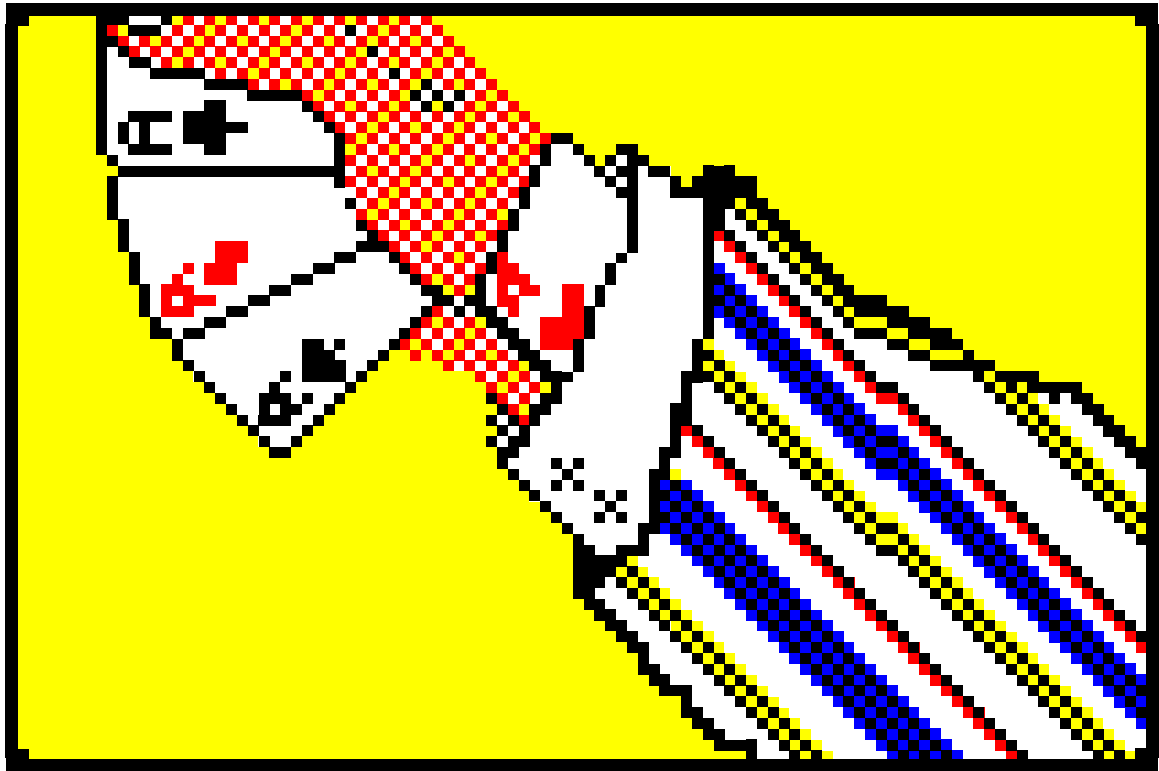




**Place
Stamp
Here**



**Place
Stamp
Here**





**Place
Stamp
Here**



**Place
Stamp
Here**
